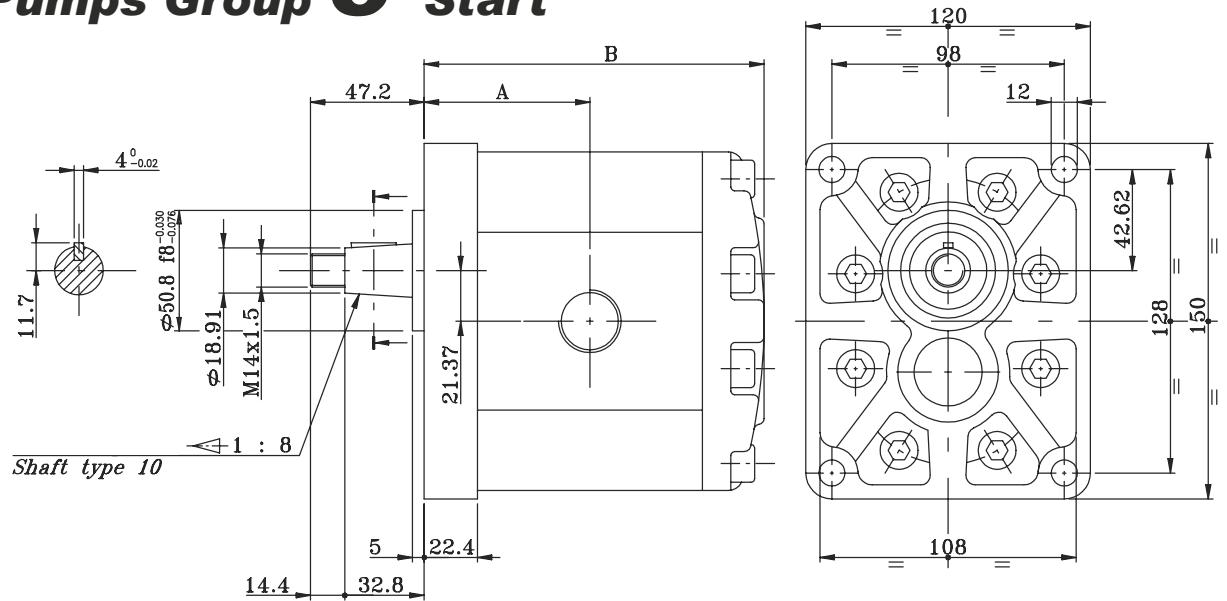
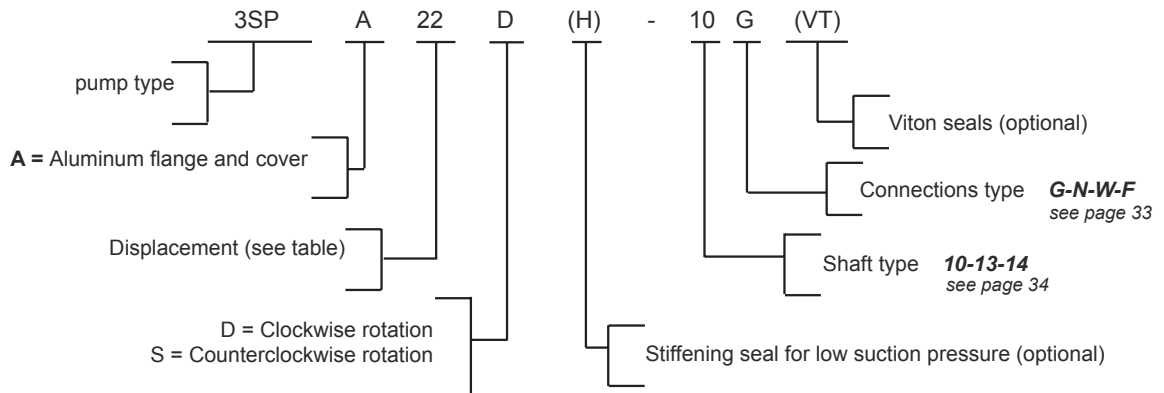


# Pumps Group **3** Start

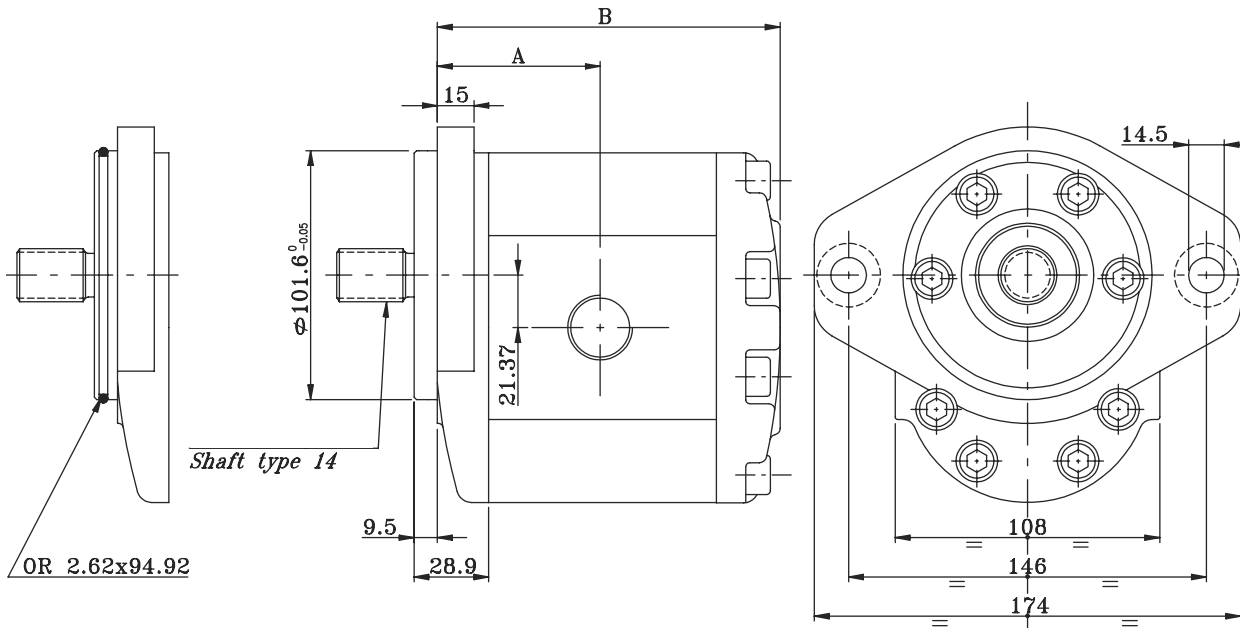


Type	Displacement cm <sup>3</sup> /rev.	Max working pressure bar			Max Speed rpm	Dimensions mm		Mass Kg
		P1	P2	P3		A	B	
3SP A19	19	250	270	300	3500	62.4	128.3	5.23
3SP A22	22.3	240	260	290	3500	63.9	131.3	5.36
3SP A29	29.3	220	240	260	3300	66.9	137.3	5.64
3SP A33	32.9	220	230	260	3300	68.4	140.3	5.78
3SP A36	36.4	210	230	250	3300	69.9	143.3	5.91
3SP A44	43.5	200	220	240	3000	72.9	149.3	6.19
3SP A52	51.7	200	210	240	3000	76.4	156.3	6.50
3SP A62	61.1	180	190	200	2500	80.4	164.3	6.87

## Example of Ordering Code

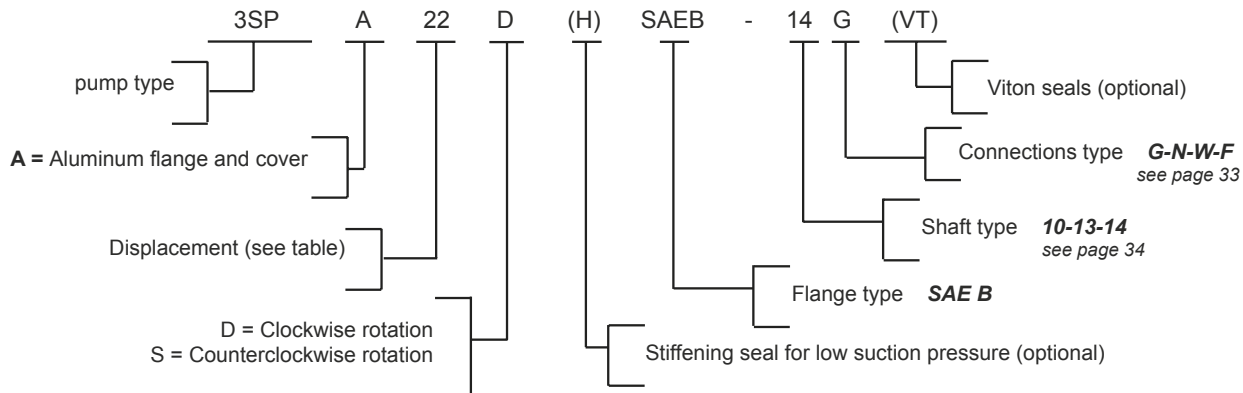


# SAE B - OR SAE B

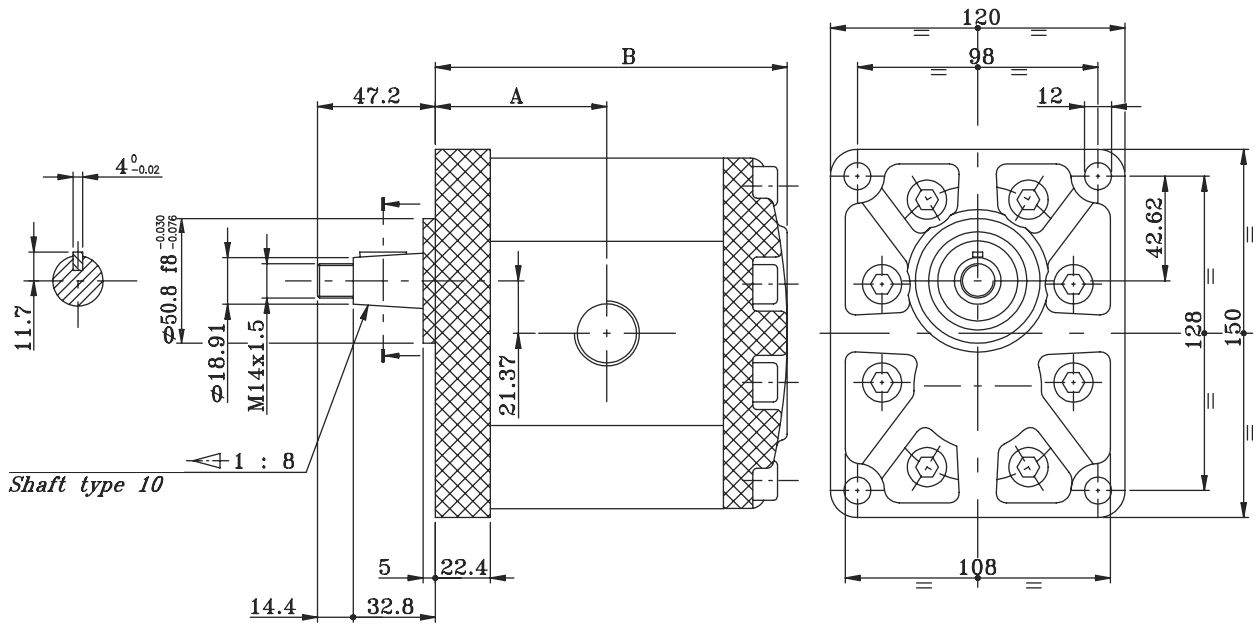


Type	Displacement cm <sup>3</sup> /rev.	Max working pressure bar			Max Speed rpm	Dimensions mm		Mass Kg
		P1	P2	P3		A	B	
3SP A19	19	250	270	300	3500	59.4	125.3	5.23
3SP A22	22.3	240	260	290	3500	60.9	128.3	5.36
3SP A29	29.3	220	240	260	3300	63.9	134.3	5.64
3SP A33	32.9	220	230	260	3300	65.4	137.3	5.78
3SP A36	36.4	210	230	250	3300	66.9	140.3	5.91
3SP A44	43.5	200	220	240	3000	69.9	146.3	6.19
3SP A52	51.7	200	210	240	3000	73.4	153.3	6.50
3SP A62	61.1	180	190	200	2500	77.4	161.3	6.87

## Example of Ordering Code

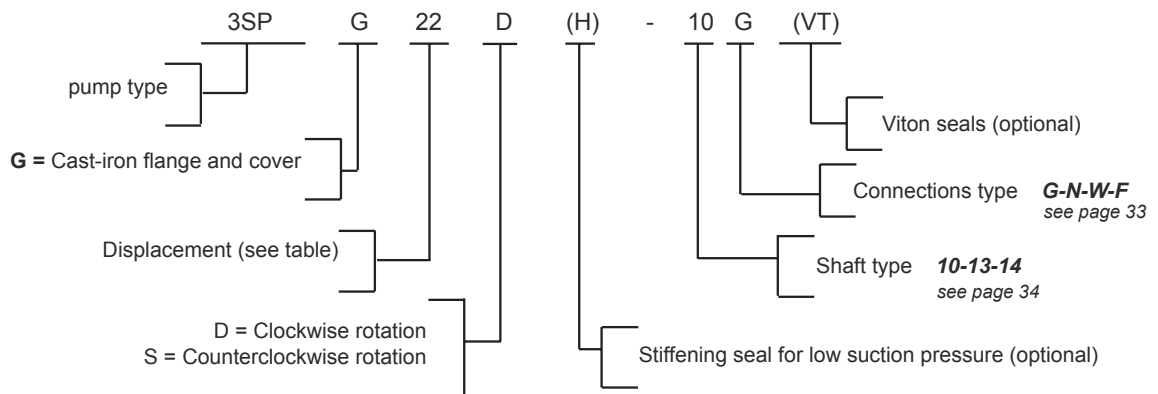


# Pumps with Cast-Iron Flange and Cover



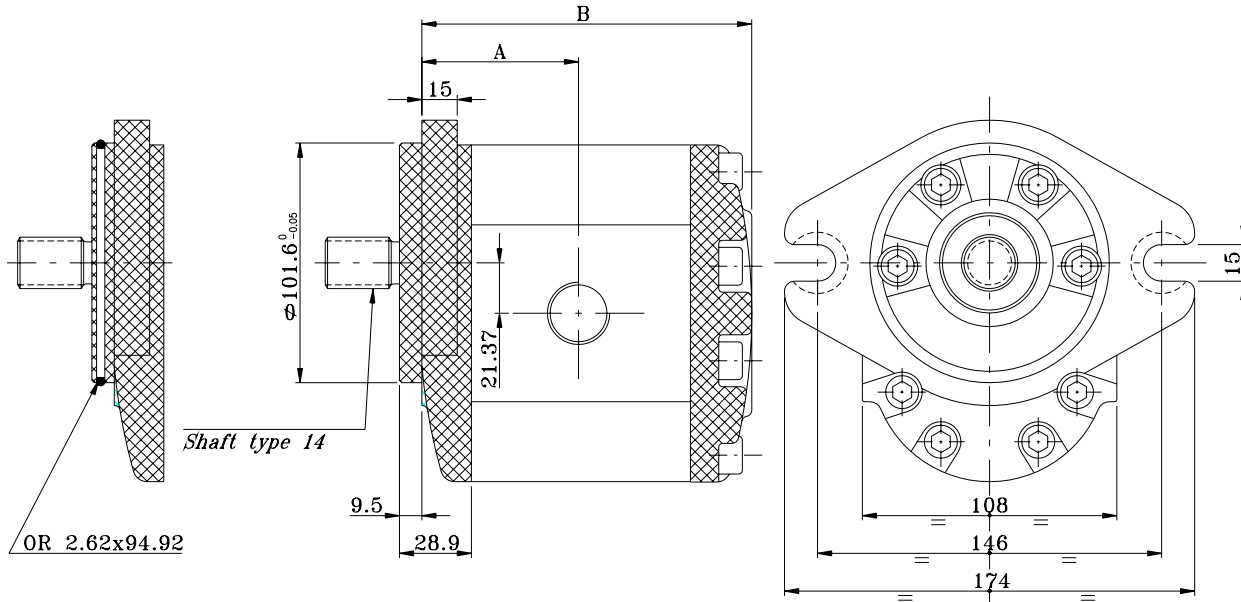
Type	Displacement cm <sup>3</sup> /rev.	Max working pressure bar			Max Speed rpm	Dimensions mm		Mass Kg
		P1	P2	P3		A	B	
3SP G19	19	250	270	300	3500	62.4	128.3	7.53
3SP G22	22.3	240	260	290	3500	63.9	131.3	7.66
3SP G29	29.3	220	240	260	3300	66.9	137.3	7.94
3SP G33	32.9	220	230	260	3300	68.9	140.3	8.08
3SP G36	36.4	210	230	250	3300	69.9	143.3	8.21
3SP G44	43.5	200	220	240	3000	72.9	149.3	8.49
3SP G52	51.7	200	210	240	3000	76.4	156.3	8.80
3SP G62	61.1	180	190	200	2500	80.4	164.3	9.17

## Example of Ordering Code



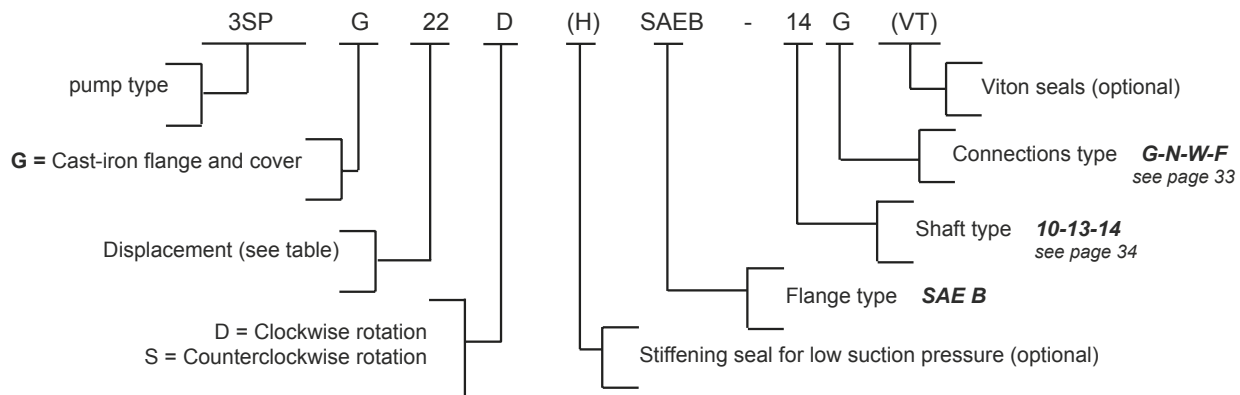
# Pumps with Cast-Iron Flange and Cover

SAE B - OR SAE B



Type	Displacement cm <sup>3</sup> /rev.	Max working pressure bar			Max Speed rpm	Dimensions mm		Mass Kg
		P1	P2	P3		A	B	
3SP G19	19	270	290	320	3500	59.4	125.3	7.59
3SP G22	22.3	260	280	300	3500	60.9	128.3	7.72
3SP G29	29.3	240	260	280	3300	63.9	134.3	8.00
3SP G33	32.9	240	260	280	3300	65.4	137.3	8.14
3SP G36	36.4	230	250	270	3300	66.9	140.3	8.27
3SP G44	43.5	200	220	240	3000	69.9	146.3	8.55
3SP G52	51.7	200	220	240	3000	73.4	153.3	8.86
3SP G62	61.1	180	190	200	2500	77.4	161.3	9.23

## Example of Ordering Code



# Connections Group 3

### Type G

Suction

Delivery

Flange type	C	D
19 / 62	G 1"	G 3/4"

### Type N

Suction

Delivery

Type	C	D	d
19 / 62	27	51	M10

### Type W

Suction

Delivery

Flange type	C	D
19 / 62	1" 5/16 -12UN	1" 1/16 -12UN

### Type F

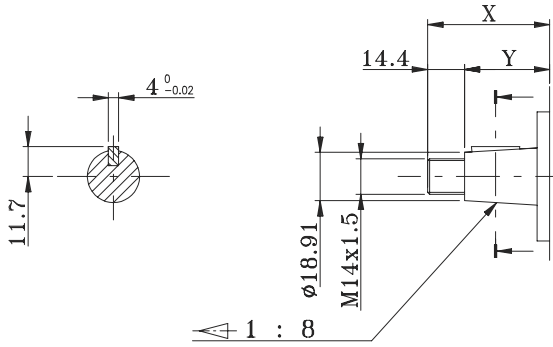
Suction

Delivery

Type	C	D	E
19 / 36	27	52.4	26.2
44 / 62	42	69.8	35.6

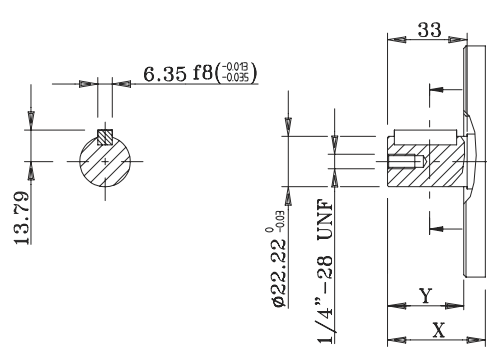
# Shafts Group 3

## Type 10



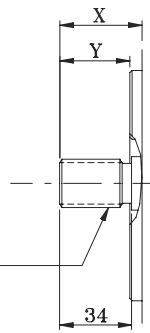
Flange type	X	Y
Standard	47.2	32.8

## Type 13



Flange type	X	Y
SEA B	41	31.5
Standard	38	33

## Type 14

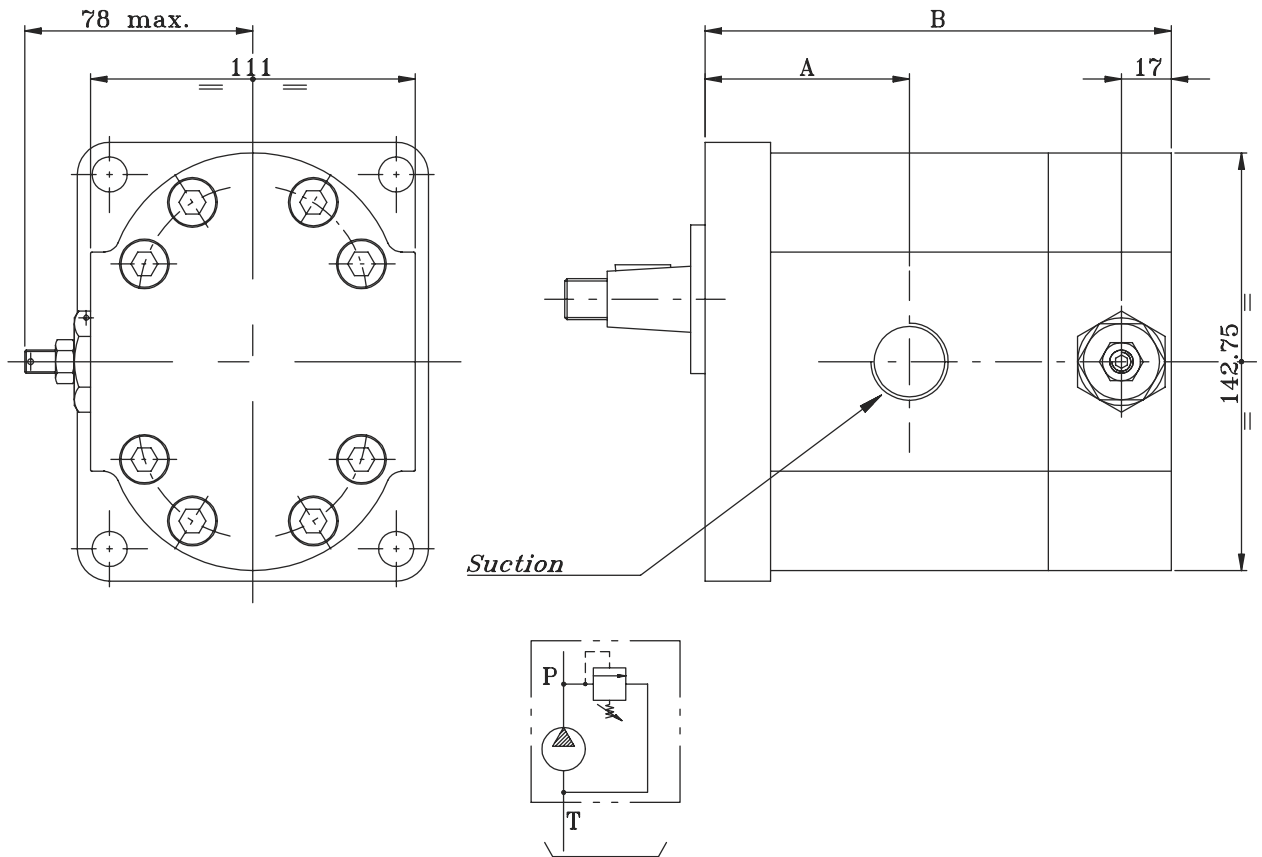


Splined profile 7/8" SAE 16/32 DP  
N° of teeth = 13

Flange type	X	Y
SEA B	41.2	31.7
Standard	38.2	33.2

# Pumps 3SP with Pressure Relief Valve

The opening of the pressure relief valve should be carried out with times not over 7" each minute to avoid the overheating of the pump.



	3SP A19	3SP A22	3SP A29	3SP A33	3SP A36	3SP A 44	3SP A 52	3SP A62
A	62.4	63.9	66.9	68.4	69.9	72.9	76.4	80.4
B	127.3	130.3	136.3	139.3	142.3	148.3	155.3	163.3

## Example of Ordering Code

3SP    A    22    D    -    10    G    VLP-1    (N)

Cover with VPL at internal exhaust } Spring type **B-N-R (\*)**

(\*) Standard setting 30 / 280 bar black spring (N)  
 Spring range on demand: 80 / 380 bar - red spring (R)  
 10 / 100 bar - white spring (B)