

# Technical Data Sheet



## DBPU DC POWER UNITS

DC Power Units are ideal for applications where hydraulic power is not readily available but DC power is.

The DC power units are commonly used in such markets as mobile, recreational vehicles, marine and various lifting applications. For example, on horse floats to raise/lower the ramp or on smaller tipper or crane trucks where PTO's are not able to be fitted.

The Power Packs are S3 duty and are made for intermittent use only (10% of 10 mins).

## Product Features

- **12 or 24 Volt IP54 Motor**  
To suit car/truck system voltages.
- **Choice of 5, 7, 10, 16 & 20 Litre Tank**  
To suit the varying application requirements.
- **Filler Breather**  
For ease of oil maintenance, control of tank pressure and aid system performance.
- **Built-in Check Valve**  
For load holding with the power off.
- **Adjustable Relief Valve**  
1 for the S/A unit.  
2 for the D/A unit (1 main & 1 low pressure on port "A").  
Not fitted to the P & T only version.
- **Flow Control Fitted (S/A Units)**  
For controlled speed during lowering of the load.

POWAUTO

DAVID BROWN  
HYDRAULICS

HYDRECO®

HYDRECO  
POWAUTO  
ADVANCED HYDRAULIC TECHNOLOGIES



[www.hydreco.com](http://www.hydreco.com)

# Technical Data Sheet

## DBPU IW E 2.1 B 2 R

### Motor

IW = 12V 1.5kW  
2A = 24V 2.0kW

### Relief Pressure

Omit for P & T port version  
E = 160 Bar (Adjustable)

### Pump Size

2.1 = 2.1cc/rev

### Pendant

R = Remote Control

### Circuit Type

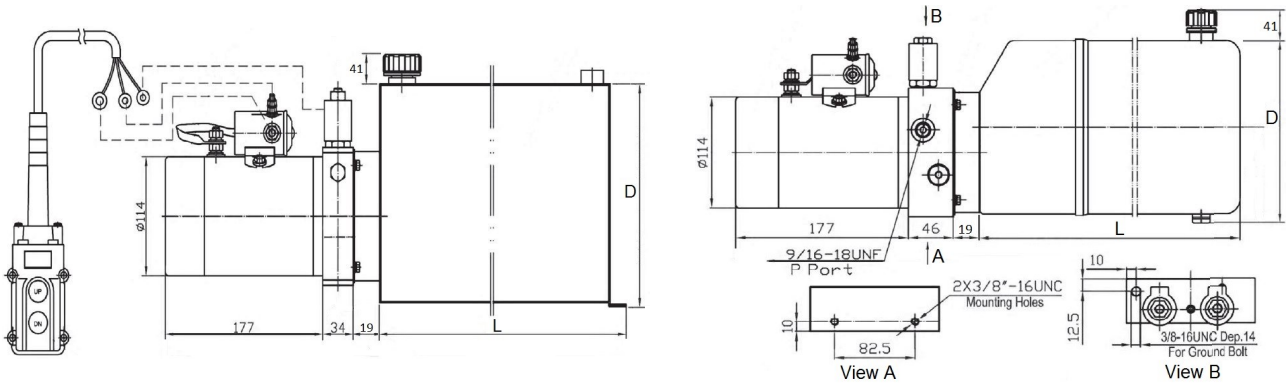
1 = P & T Port only  
2 = Single Acting  
6I = Double Acting

### Tank Capacity

A, B, C, D, E, G, H (see Table)

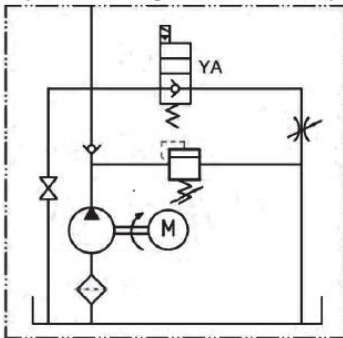
Code	Volume	L	D	W
A	3	170	160	
B	5	225	169	
C	7	348	176	
D	10	300	170	200
E	12	300	200	200
G	16	340	220	240
H	20	350	250	250

The Power Unit is to be mounted horizontally.  
Oil viscosity should be 32 to 68 cSt @ 40°C.  
Change oil after 100 hours of use, then every 3000 hours.

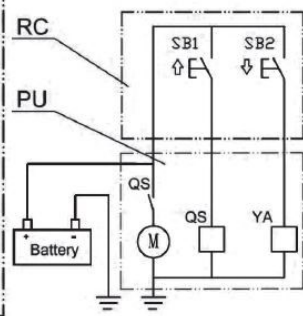


### Single Acting

P (SAE #6 O-ring Port 9/16-18UNF)



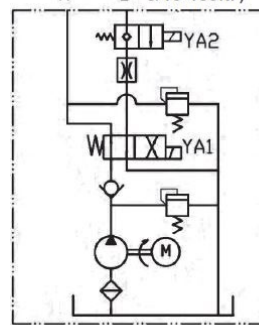
Hydraulic Schematic



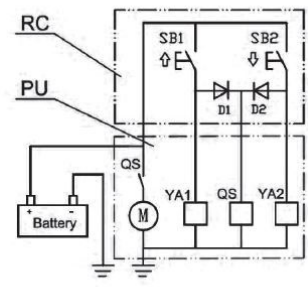
Electrical Schematic

### Double Acting

(SAE #6 O-ring Port 9/16-18UNF)



Hydraulic Schematic



Electrical Schematic

Spare Parts		Spare Parts		Spare Parts	
12V 1.5kW Motor	DBPU-MOTOR-12-1	24V 2.0kW Motor	DBPU-MOTOR-24-2	Breather	DBPU-BREATHER
12V Coil & 2/2 Valve	DBPU-2X2VALVE-12	24V Coil & 2/2 Valve	DBPU-2X2VALVE-24	Remote Control S/A	DBPU-SA-RC
12V Coil & 4/2 Valve	DBPU-4X2VALVE-12	24V Coil & 4/2 Valve	DBPU-4X2VALVE-24	Remote Control D/A	DBPU-DA-RC
12V Coil for 2/2 Valve	DBPU-2X2-COIL-12	24V Coil for 2/2 Valve	DBPU-2X2-COIL-24	Seal Kit, S/A	DBPU-SK-TMS/A
12V Coil for 4/2 Valve	DBPU-4X2-COIL-12	24V Coil for 4/2 Valve	DBPU-4X2-COIL-24	Seal Kit, D/A	DBPU-SK-TMD/A
12V Relay	DBPU-RELAY-12	24V Relay	DBPU-RELAY-24		

Doc: DBPU—11/19

POWAUTO

DAVID BROWN  
HYDRAULICS

HYDRECO®

HYDRECO  
POWAUTO

ADVANCED HYDRAULIC TECHNOLOGIES



www.hydreco.com