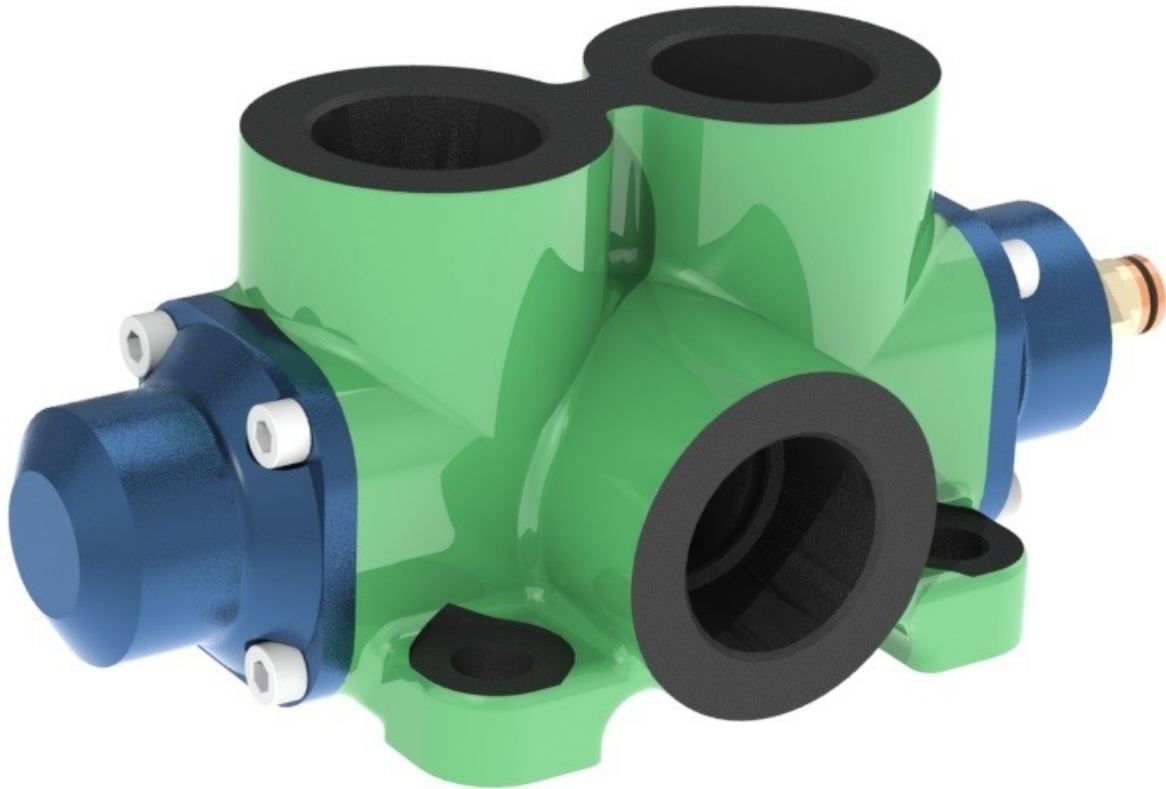


Technical Data Sheet



89 SERIES DIVERTER VALVES

Three Way—Two Position Diverter Valves

The 89 Series valve is used to direct oil flow from between two hydraulic applications.

This valve is used extensively in “truck and dog” applications for tipping both the front and rear trailers.

Use this valve in conjunction with a dual control (e.g. CK113 or CK114).

Suits:

Truck and trailer applications
Winch and hoist applications

Product Features

- **Hard chrome spools**
For trouble-free/consistent operation and long life.
- **Large ports and spool passages**
Providing maximum flow with minimal pressure drop through the valve.
- **Simple design**
For trouble-free installation and operation. Lowers maintenance costs.
- **420Bar (6000psi) working pressure**
To provide suitability to a wide range of applications.
- **Air operation with knob or cable options**
For ease of operation from the cabin, while provided flexibility in application.

POWAUTO

DAVID BROWN
HYDRAULICS

HYDRECO®

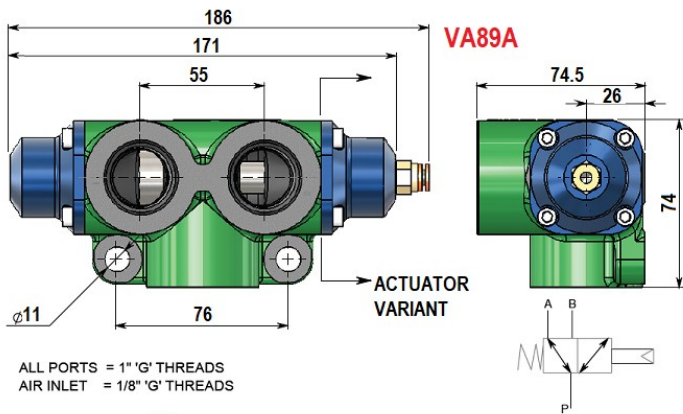
HYDRECO
POWAUTO

ADVANCED HYDRAULIC TECHNOLOGIES



www.hydreco.com

Technical Data Sheet



VALVE DESIGNATION CODES

89 series valve

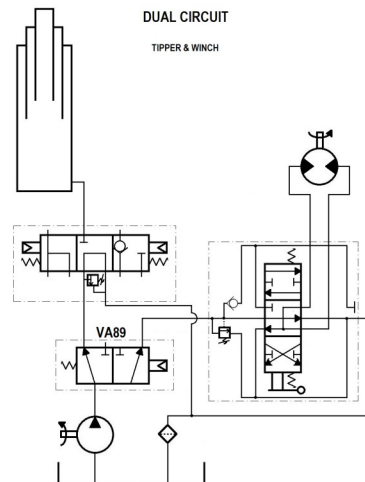
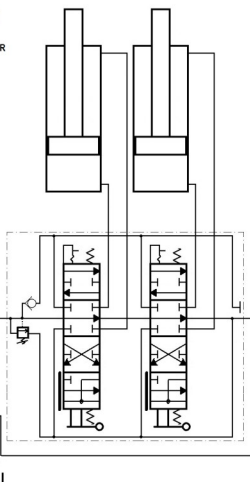
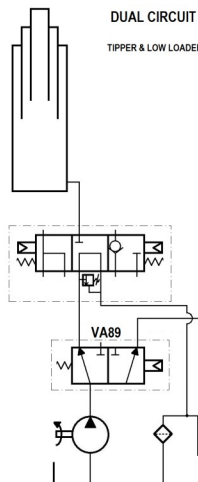
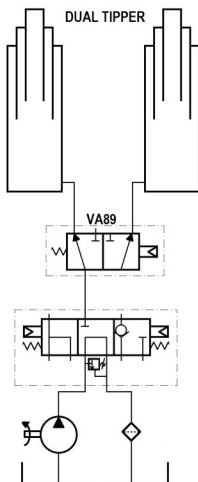
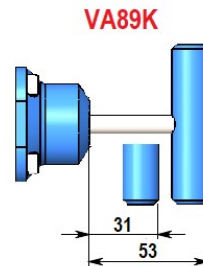
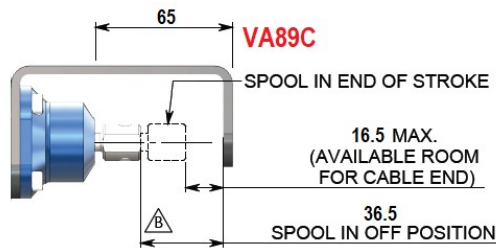
Identifier
VA = Valve

Valve Series
89

Engagement Type

A = Air
C = Cable
K = Knob

VA 89 A



Technical Specifications		VA89#
Flow	L/min / gpm	275 / 73
Working Pressure	Bar / psi	420 / 6000
Peak Pressure	Bar / psi	450 / 6400
Bare Mass - VA89A	kg	2.5
Bare Mass - VA89K	kg	2.6
Port Sizes		1" BSPP
Seal Kit		SK050A

Note: Hydreco recommends the use of filtration in all hydraulic circuits to a maximum of 25µ.

Doc: VA89—10/20

POWAUTO

DAVID BROWN
HYDRAULICS

HYDRECO®

HYDRECO
POWAUTO
ADVANCED HYDRAULIC TECHNOLOGIES



www.hydreco.com